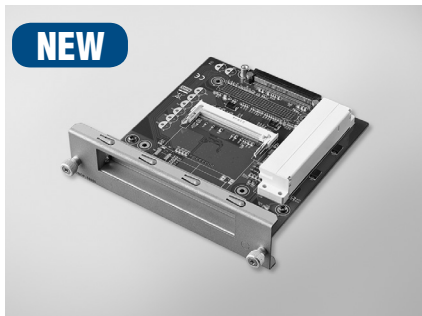


# UNOP-1000I UNOP-1000J UNOP-1000K

## PCI & Mini-PCI Expansion Card

## PCI-104 & Mini-PCle Expansion Card

## PCle Expansion Card



NEW

UNOP-1000I



CE FCC

### Specifications

#### General

- **Connector** 120-pin connector for UNO-4673A/PCI, UNO-4683/PCI, ECU-4784/PCI
- **Dimensions** 5.3" x 6.0" (136 x 150 mm)
- **Power Consumption** 5V ± 5% @ 620mA typical  
3.3V ± 5% @ 75mA typical
- **Certification** CE/FCC

#### Communications

- **BUS Type** PCI, Mini-PCI (reserved)

#### Protection

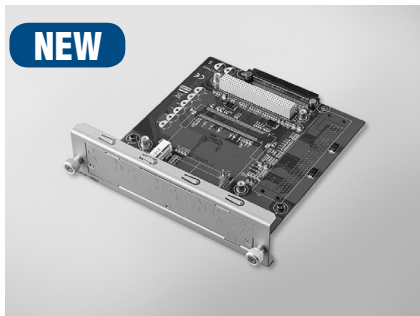
- **Isolation Protection** 2,500 V<sub>DC</sub>

#### Environment

- **Operating Temp.** -20 ~ 70°C (-4 ~ 158°F)
- **Operating Humidity** 10 ~ 90% RH non-condensing (refer to IEC 60068-2-3)
- **Storage Humidity** 5 ~ 95% RH non-condensing (refer to IEC 60068-2-3)

### Ordering Information

- **UNOP-1000I-BE** PCI & Mini-PCI Expansion card for UNO-4673A,4683



NEW

UNOP-1000J



CE FCC

### Specifications

#### General

- **Connector** 120-pin connector for UNO-4673A/PCI, UNO-4683/PCI, ECU-4784/PCI
- **Dimensions** 5.3" x 6.0" (136 x 150 mm)
- **Power Consumption** 5V ± 5% @ 500mA typical.  
3.3V ± 5% @ 180mA typical.
- **Certification** CE/FCC

#### Communications

- **BUS Type** PCI-104, Mini-PCle
- **I/O Connectors** 1 x 120-pin box header

#### Protection

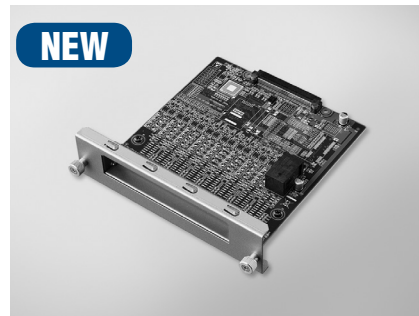
- **Isolation Protection** 2,500 V<sub>DC</sub>

#### Environment

- **Operating Temp.** -20 ~ 70°C (-4 ~ 158°F)
- **Operating Humidity** 10 ~ 90% RH non-condensing (refer to IEC 60068-2-3)
- **Storage Humidity** 5 ~ 95% RH non-condensing (refer to IEC 60068-2-3)

### Ordering Information

- **UNOP-1000J-BE** PCI-104&Mini-PCle Expansion card of UNO-4673A,83



NEW

UNOP-1000K



CE FCC

### Specifications

#### General

- **Connector** 120-pin connector for UNO-UNO-4673A/PCle, UNO-4683/PCle, ECU-4784/PCle
- **Dimensions** 5.3" x 6.0" (136 x 150 mm)
- **Power Consumption** 5V ± 5% @ 400mA typical  
3.3V ± 5% @ 180mA typical.
- **Certification** CE/FCC

#### Communications

- **BUS Type** PCle x1, Mini-PCle (reserved)

#### Protection

- **Isolation Protection** 2,500 V<sub>DC</sub>

#### Environment

- **Operating Temp.** -20 ~ 70°C (-4 ~ 158°F)
- **Operating Humidity** 10 ~ 90% RH non-condensing (refer to IEC 60068-2-3)
- **Storage Humidity** 5 ~ 95% RH non-condensing (refer to IEC 60068-2-3)

### Ordering Information

- **UNOP-1000K-AE** PCle Expansion card for UNO-4673A,4683